

# LORETTA POUF

Design E. Gallina

POUF | POUF

2016



# LORETTA POUF

Design E. Gallina

POUF | POUF

2016

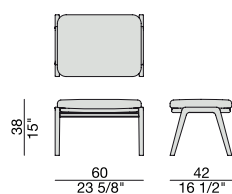
Pouf con struttura in massello di frassino e rivestimento nei tessuti della collezione.

*Stool with frame in solid ash wood and cover in the fabrics of the collection.*

*Pouf mit Gestell aus massiver Esche und Bezug in den Stoffen der Kollektion.*

*Pouf avec structure en frêne massif et revêtement dans les tissus de la collection.*

*Pouf con estructura en fresno macizo y revestimiento en las telas de la colección.*



# LORETTA POUF

Design E. Gallina

POUF | POUF

2016

## Essenze | Wood



FRASSINONATURALE  
Natural Ash



FRASSINO  
Ash  
*tinto/stained moka*



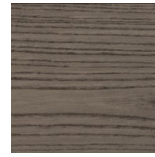
FRASSINO  
Ash  
*tinto/stained canaletta walnut*



FRASSINO  
Ash  
*tinto/stained wengé*

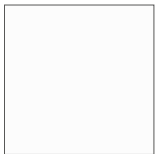


FRASSINO  
Ash  
*tinto/stained canapa*

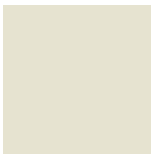


FRASSINO  
Ash  
*tinto/stained caffè*

## Laccato opaco poro aperto | Matt Lacquered open pore



BIANCO  
White  
(RAL 9016)



AVORIO  
Ivory  
(RAL 1013)



ARGILLA  
Argilla  
(RAL 7006)



PIOMBO  
Piombo  
(NCS S5005G20Y)



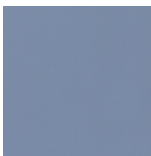
NERO  
Black  
(RAL 9005)



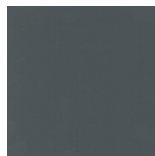
GRANATA  
Granata  
(NCS S4050Y90R)



PISTACCHIO  
Pistacchio  
(PANTONE 5825)



AVIO  
Avio  
(PANTONE 5415)



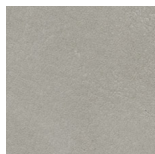
IRON  
Iron  
(RAL 7011)



CIOCCOLATO  
Chocolate  
(RAL 8019)

## Pelle | Leather

### Cat. LUX



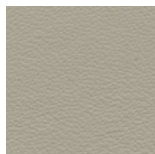
Nabuk

### Cat. PLUS



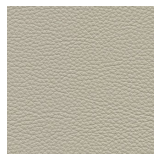
Pelle PLUS

### Cat. EXTRA



Pelle EXTRA

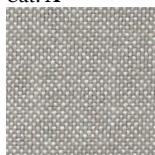
### Cat. PELLE



Pelle

## Rivestimento | Cover

### Cat. A



Hallindal 65



Hound

### Cat. B



Rabat



Milord

### Cat. C



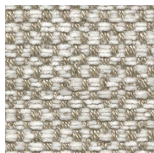
Armam



Fashion



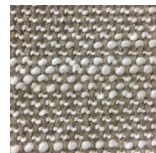
Flax



Ikat



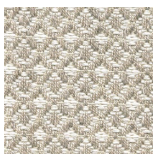
Loom



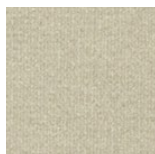
Madras



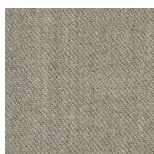
Moran



Thalys

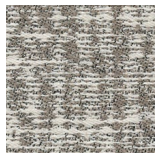


Velvet

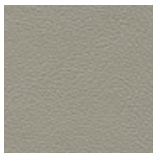


Wool

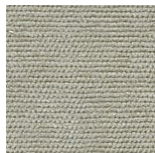
### Cat. D



Astra



Ecopelle



Range



Tress

### Cat. E



Cotone



Dorian



In Bianco/Calico

### Cat. COM

Disponibile con tessuto fornito dal cliente.

Available with fabric supplied by the customer.

Verfügbar mit Kundenstoff.

Disponible avec tissu du client.

Disponible con tela suministrada por el cliente.