



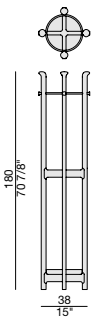
Portabiti con porta ombrelli in massello di noce canaletta con elemento di base in marmo di Carrara. Componenti in metallo con finitura ottone spazzolato.

Clothes-stand with umbrella stand in solid canaletta walnut and base in Carrara marble. Metal components in brushed brass finish.

Kleiderständer und Schirmständer aus Nussbaum Canaletta und Gestell aus Carrara Marmor. Metallteile aus Kupfer.

Porte manteaux avec porte-parapluie en noyer canaletta massif avec piètement en marbre Carrara. Elements en métal en cuivre brossé.

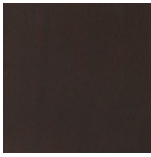
Perchero con paragüero en nogal canaletta macizo con base en mármol de Carrara. Componentes de metal en acabado latón cepillado.



Essenze | Wood



NOCE CANALETTA
Canaletta Walnut

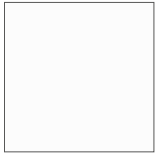


NOCE CANALETTA
Canaletta Walnut
tinto/stained moka



NOCE CANALETTA
Canaletta Walnut
tinto/stained wengé

Laccato opaco poro chiuso | Matt Lacquered closed pore



BIANCO
White
(RAL 9016)



AVORIO
Ivory
(RAL 1013)



ARGILLA
Argilla
(RAL 7006)



PIOMBO
Piombo
(NCS S5005G20Y)



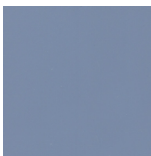
NERO
Black
(RAL 9005)



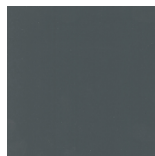
GRANATA
Granata
(NCS S4050Y90R)



PISTACCHIO
Pistacchio
(PANTONE 5825)



AVIO
Avio
(PANTONE 5415)

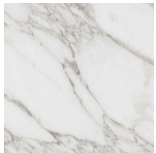


IRON
Iron
(RAL 7011)



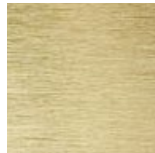
CIOCCOLATO
Chocolate
(RAL 8019)

Marmo | Marble



Carrara

Metallo | Metal



OTTONE SPAZZOLATO
Brushed brass