



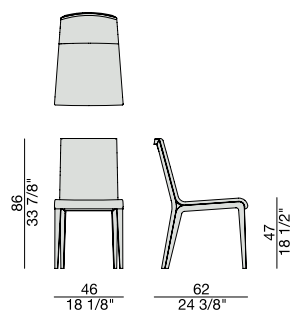
Sedia con doppia struttura in massello di noce canaletta. Seduta e schienale in legno curvato rivestito nei tessuti della collezione.

*Chair with double frame in solid canaletta walnut. Seat and back in curved wood upholstered in the fabrics of the collection.*

*Stuhl mit doppeltem Rahmen in massivem Nussbaum Canaletta. Sitz und Rückenfläche aus geschwungenen Holz bezogen aus den Stoffen und Ledern der Collection.*

*Chaise avec double structure en noyer canaletta massif. Assise et dossier en bois tourné et revêtus dans les tissus de la collection.*

*Silla con estructura doble de nogal canaletta macizo. Asiento y respaldo de madera curvada revestida en las telas de la colección.*



## Essenze | Wood



NOCE CANALETTA  
Canaletta Walnut



NOCE CANALETTA  
Canaletta Walnut  
*tinto/stained moka*



NOCE CANALETTA  
Canaletta Walnut  
*tinto/stained wengé*

## Laccato opaco poro chiuso | Matt Lacquered closed pore



BIANCO  
White  
(RAL 9016)



AVORIO  
Ivory  
(RAL 1013)



ARGILLA  
Argilla  
(RAL 7006)



PIOMBO  
Piombo  
(NCS S5005G20Y)



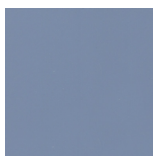
NERO  
Black  
(RAL 9005)



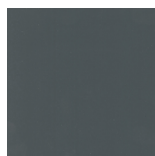
GRANATA  
Granata  
(NCS S4050Y90R)



PISTACCHIO  
Pistacchio  
(PANTONE 5825)



AVIO  
Avio  
(PANTONE 5415)



IRON  
Iron  
(RAL 7011)



CIOCCOLATO  
Chocolate  
(RAL 8019)

## Pelle | Leather

### Cat. LUX



Nabuk

### Cat. PLUS



Pelle PLUS

### Cat. EXTRA



Pelle EXTRA

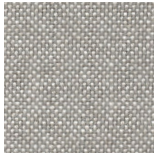
### Cat. PELLE



Pelle

## Rivestimento | Cover

### Cat. A



Hallingdal 65



Hound

### Cat. B



Rabat



Milord

### Cat. C



Armam



Fashion



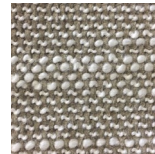
Flax



Ikat



Loom



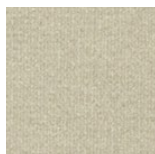
Madras



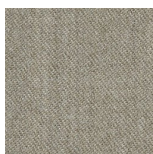
Moran



Thalys

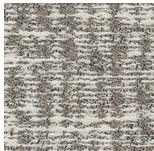


Velvet

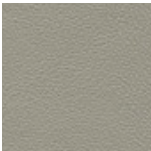


Wool

### Cat. D



Astra



Ecopelle



Range



Tress

### Cat. E



Cotone



Dorian



In Bianco/Calico

### Cat. COM

Disponibile con tessuto fornito dal cliente.

Available with fabric supplied by the customer.

Verfügbar mit Kundenstoff.

Disponible avec tissu du client.

Disponible con tela suministrada por el cliente.